



**IP Mini Dome
ACM-360x series**

Ver. 090518

Quick Installation Guide



www.acti.com

1

Getting Started

1.1 PACKAGE CONTENTS

ACM-3601/ACM-3603



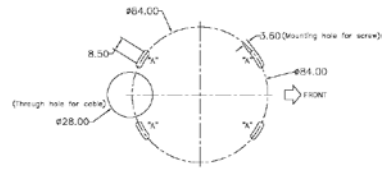
Product CD



Warranty Card



Drill Template



Mount Screws



Allen/Hex Key



RJ45 Field Installable Feed Through Adaptor (ACM-3601 Only)



M12 Field Installable Feed Through Adaptor (ACM-3603 Only)



1.2 PHYSICAL DESCRIPTION



1. **Ethernet Indicator LED**

The LED will indicate ethernet speed and active states after IP camera has connected completely.

2. **Power LED**

The LED will light up after IP camera has successfully completed the boot process

3. **Reset Button**

Step 1: Switch off IP device by disconnecting the power cable

Step 2: Press and continue to hold the Reset Button. Reconnect the power cable while continuing to hold the reset button.

Step 3: Keep holding the reset button depressed around 16 seconds, release the reset button. The unit will start up with factory default settings.

Model	ACM-3601	ACM-3603
Picture		
Type	Rugged RJ-45 Connector	Rugged M12 Connector

1. Ethernet Port

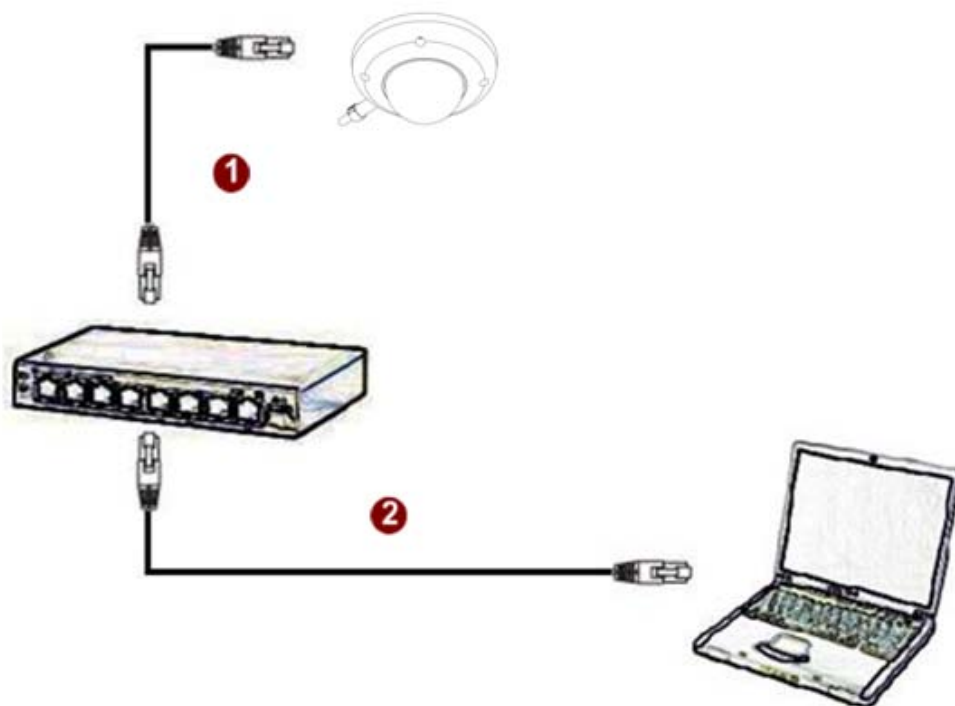
The IP device connects to the Ethernet via a female RJ-45 industrial connector(ACM-3601) or a male M12 D-code Ethernet connector(ACM-3603)

The Ethernet port supporting Power over Ethernet.

Supporting NWAY, this IP device can auto detect the speed of local network segment (10Base-T/100Base-TX Ethernet).

1.3 BASIC CONNECTIONS

Follow the procedures below to connect the IP device to the respective apparatuses.



1. Connect this IP device's ethernet port to an Ethernet (RJ45/ M12 connector). IP device has only PoE built-in, you must regard it as a PD and connect it directly to a PSE device like PoE switch.
2. Connect a PC to the Ethernet hub

2



NOTE: You may find a support package for help you getting familiar with PoE. Please visit our web site, and get the support document TS-00040.

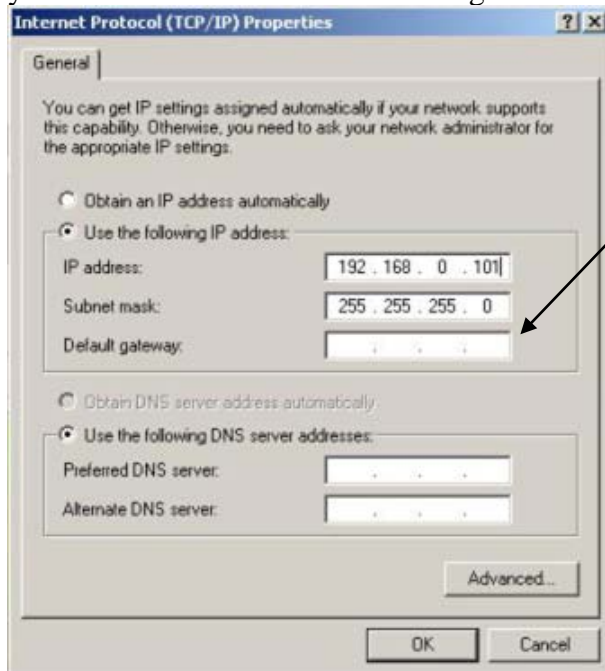
Quick Tour

This section guides you with a quick tour on this IP device.

2.1 Configure this IP Device

2.1.1 Make sure network environment

Default IP of this IP device is 192.168.0.100. Please make sure this IP device and your PC are on the same network segment before running the installation.

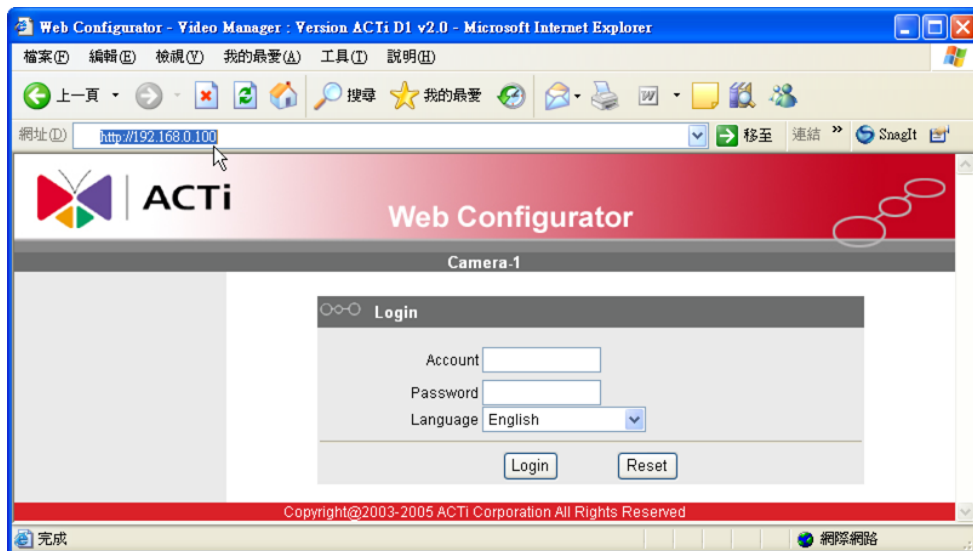


Please set the settings as below.

IP address: 192.168.0.xxx
Subnet mask: 255.255.255.0

(NOTE: xxx should be a number from 1 to 254, but 100 is excepted.)

2.1.2 Open Internal Explorer with IP address

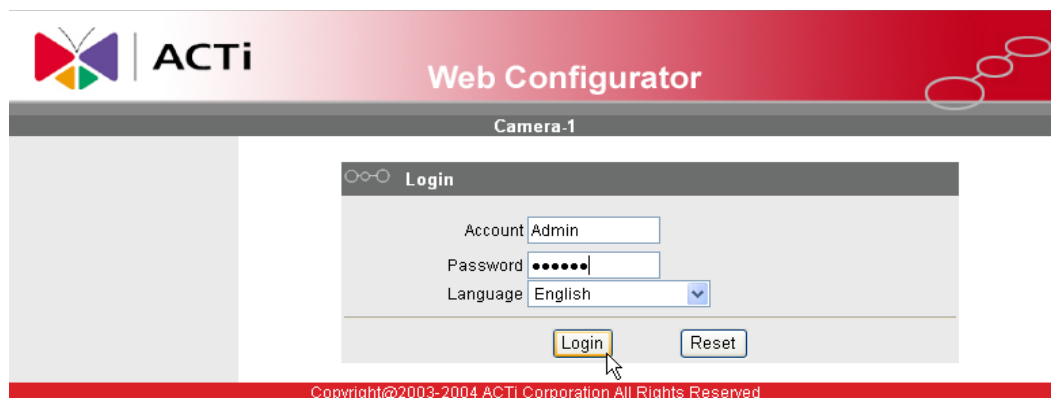



NOTE: If your web browser is earlier than IE6, then download IE6 is recommended.



NOTE: This IP device default IP address is set to 192.168.0.100

2.1.3 Login with default administrator's account & password

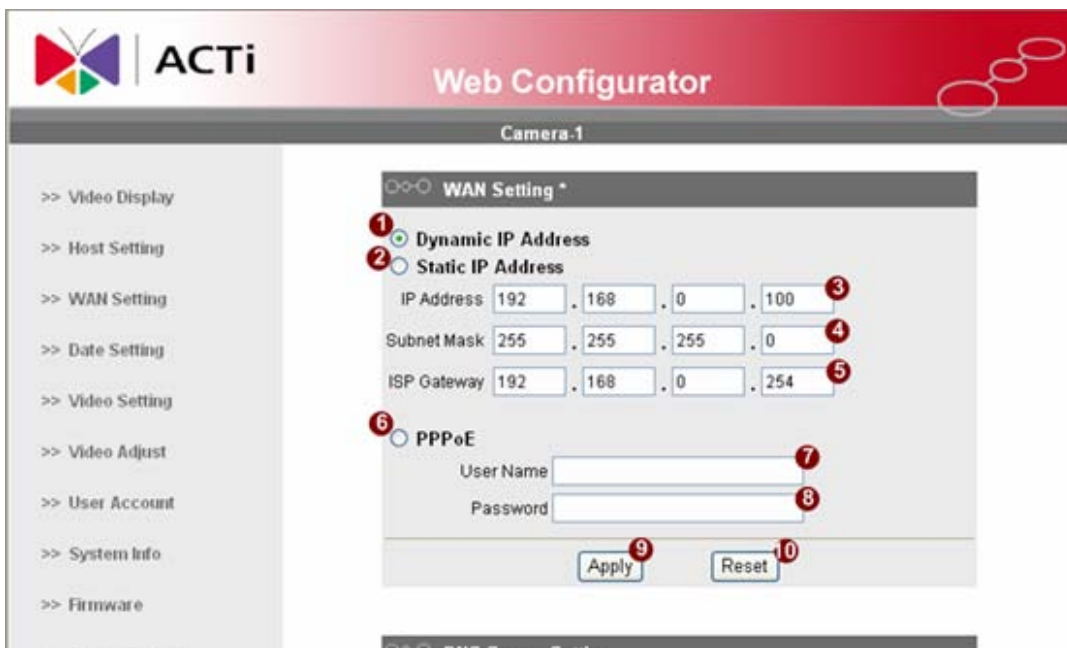


NOTE: Default administrator account is set to **Admin**, password is set to **123456**, and click  button.

2.1.4 Preview the video






2.1.5 Set the new IP address



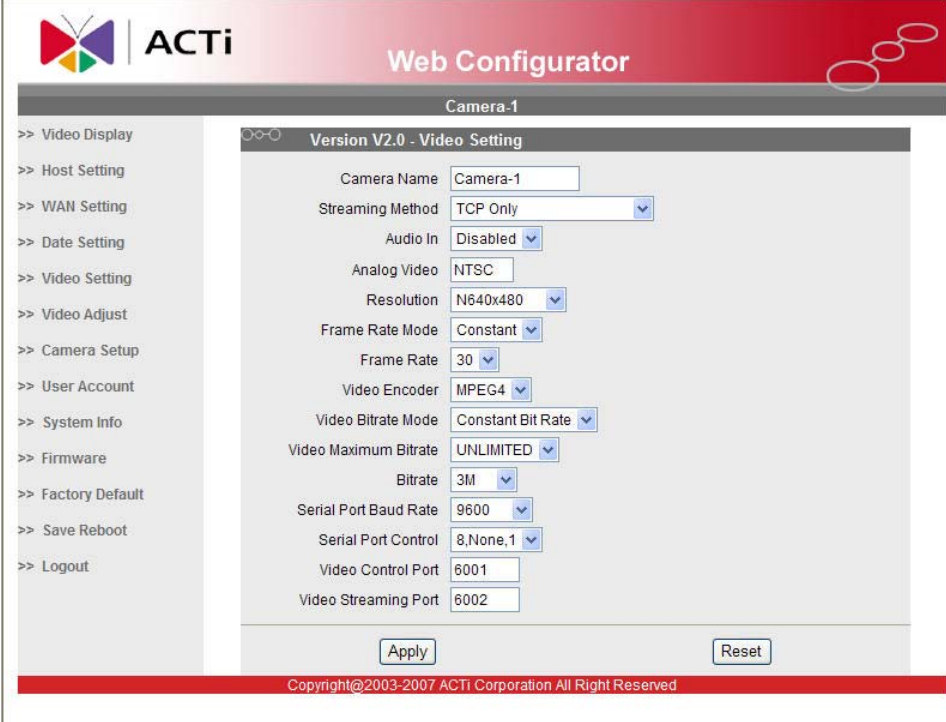
*IP Address : The default IP address is 192.168.0.100.

***Subnet Mask** : The default subnet mask is 255.255.255.0

*Click  button

	NOTE: In your Client PC, please make sure the setting of Network Connections Type is set to Auto Negotiation, since this IP device follows MII standard. Otherwise, you might not see the live image.
	IMPORTANT: After the IP address is changed, please record this IP address. There's no way to connect to the IP device if user forgets the new IP address.

2.1.6 Check Default Video Setting



2.1.7 Click **Save Reboot** to restore all settings and please wait about 30 seconds for system reboot.