

Procedure for connecting a microphone to ACTI 7321 camera

Camera Model: 7321N
Microphone Model: SM5



Installation Procedures:

Take the SM5 microphone out of the packaging. You should have the following included in your kit.

- 1- 12 volt 500 mAs power supply
- 1- Indoor wall mount microphone
- 1- Ac microphone interface
- 1- RCA pig tail

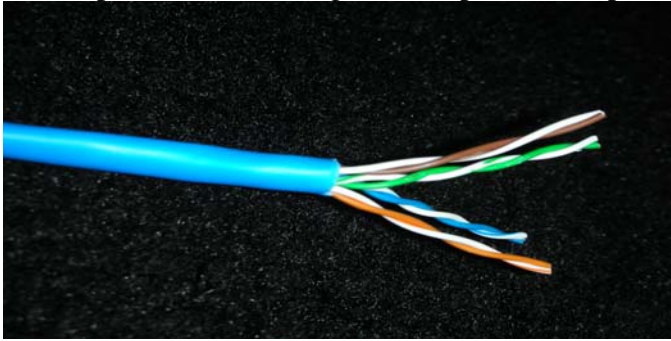
Cable Length		Cable Type
1 ft	- 300 ft	Cat5E
300 ft	- 600 ft	18 gauge

*the following installation was under 300ft and cat5e cable was used

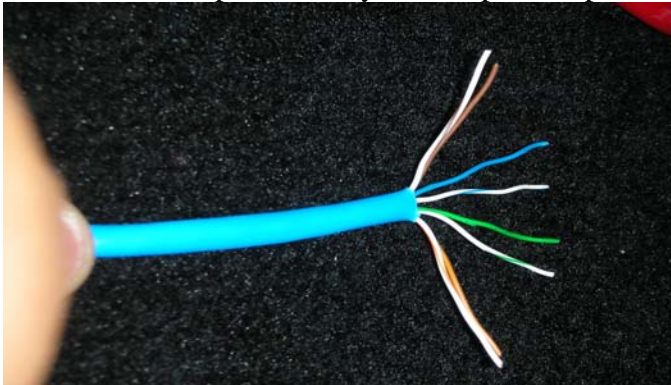
*****Before starting make sure the cameras and microphones are not powered**



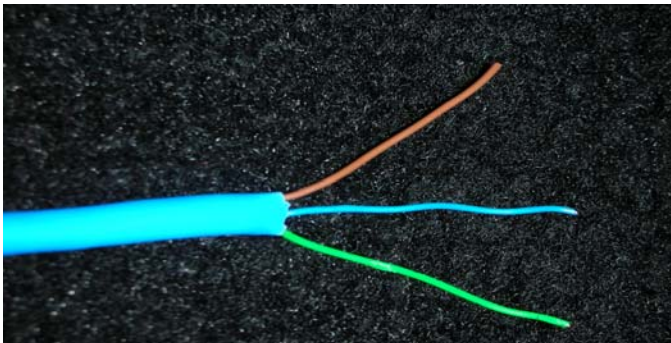
1- Strip ½ inch of cladding so the 4 pairs are exposed



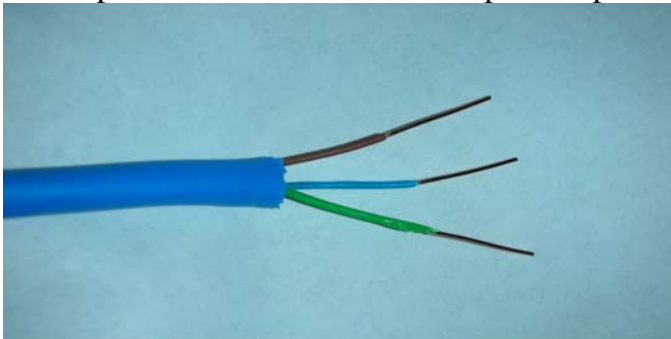
2- Un twist the pairs so they are not paired up



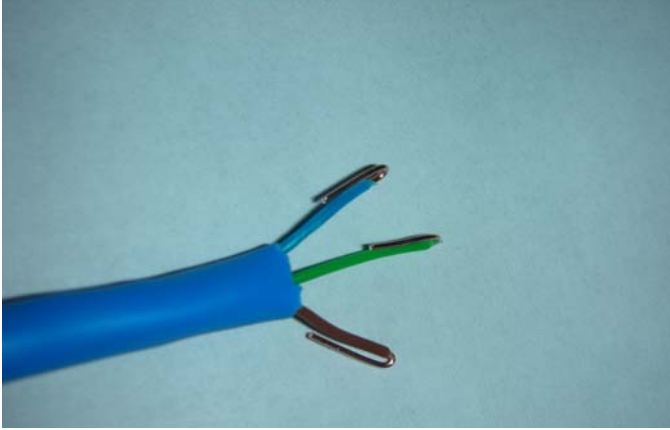
3- In this example we are using the solid blue, solid green and the solid brown cable. You can cut the rest off as shown in the picture below



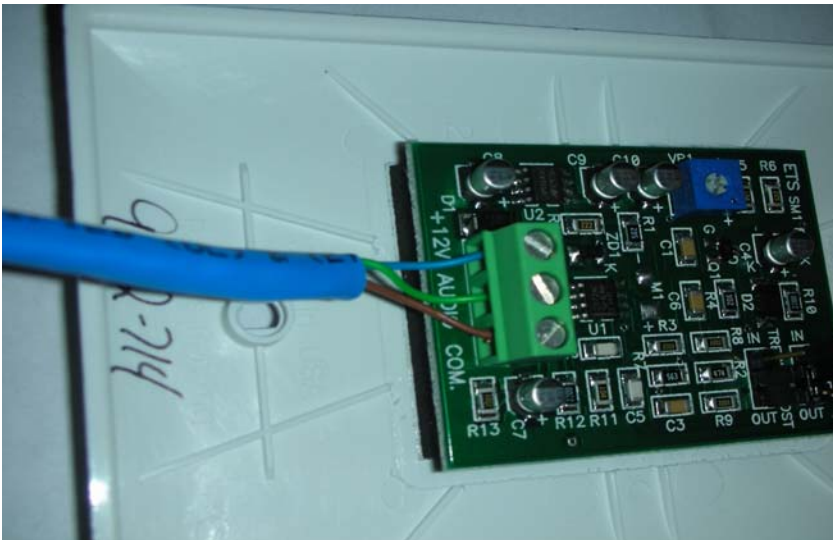
4- Strip ½ of the insulator so the cooper is exposed



5- Twist the copper ends individually so you form a small loop this will help keep the cable snug inside the connector



6- Insert the blue cable into the +12v connector, green into the audio connector and the brown to the com connector



7- Now tighten the screws and verify that each cable is secure



****Do not mount the plate just yet you may need to make adjustments**

Now we will be working on the camera end

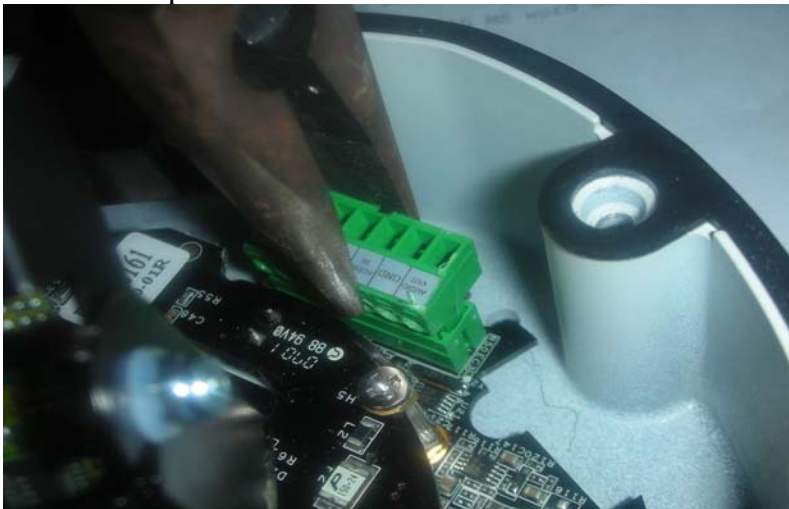
1- Loosen the 3 torque screws on the camera



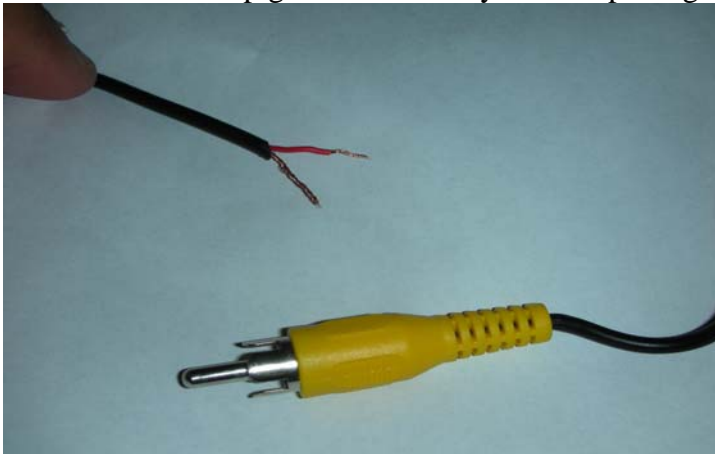
2- Once the 3 torques have been loosened the cover has a hinge which allows it to hang



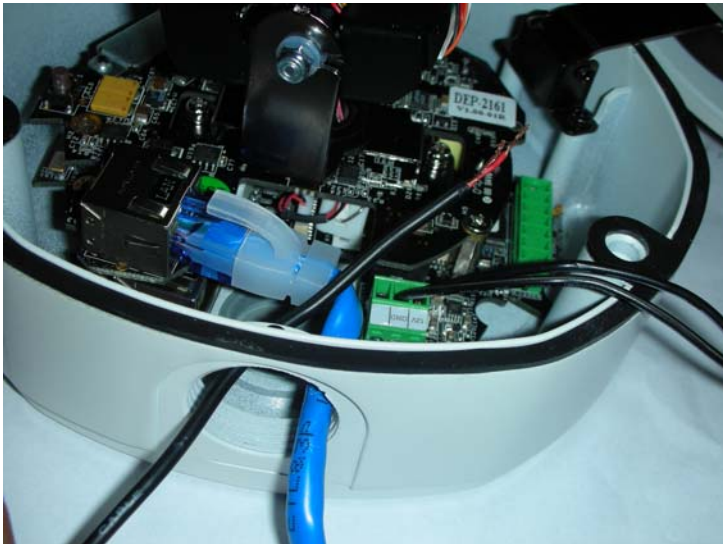
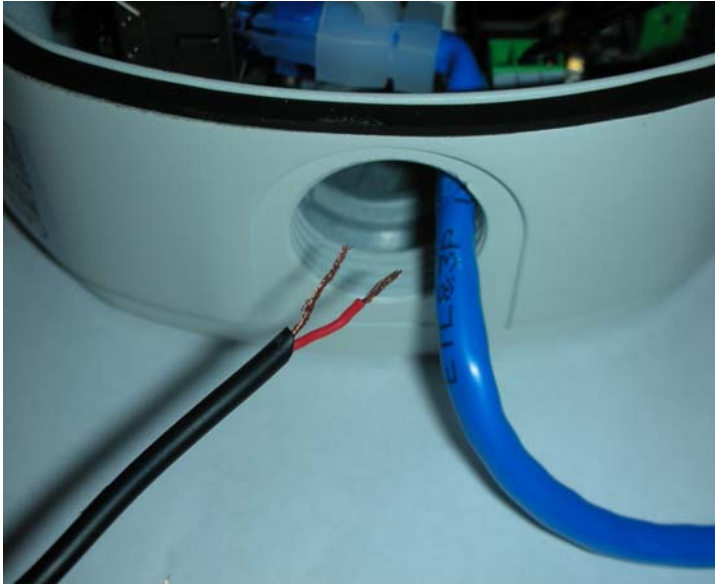
3- Remove the green audio block from the camera board use a Needle nose pliers



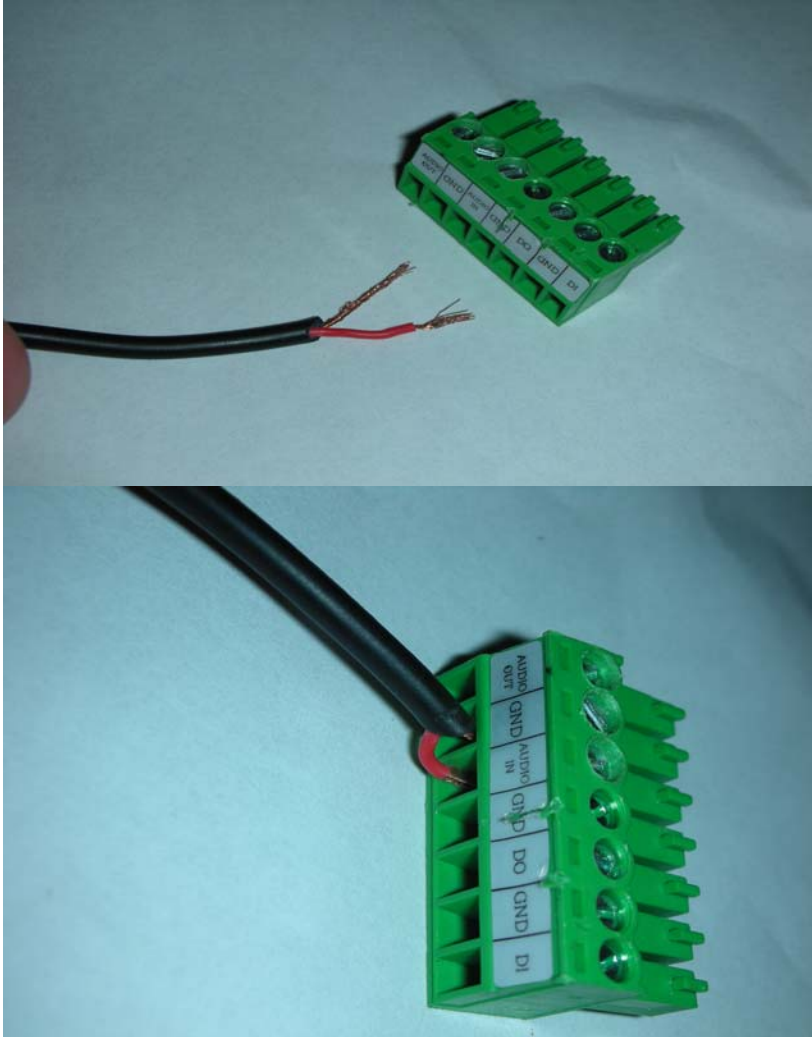
4- Take the RCA pigtail that was in your sm5 package



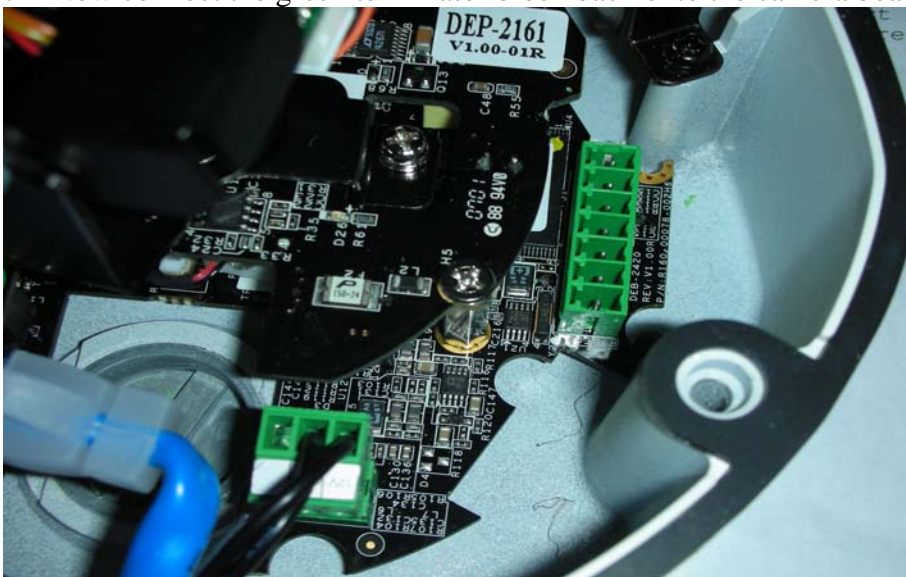
5- Run the cable through the cable port either on the back of the Camera or the side of the camera



6- Connect the red cable to the audio in on the termination then connect the bare cable to the gnd on the termination block

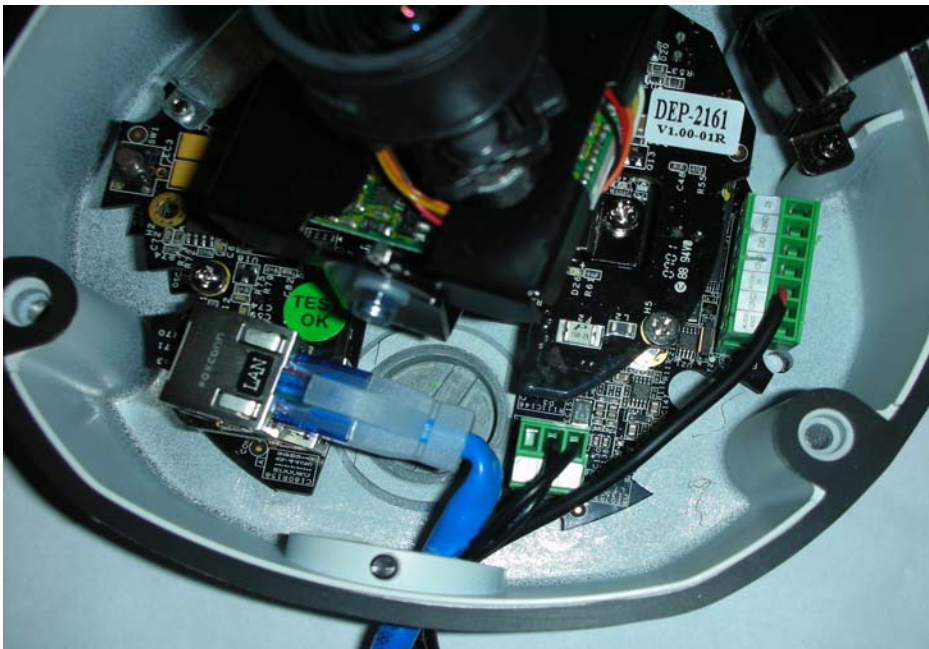


7- Now connect the green terminator block back onto the camera board





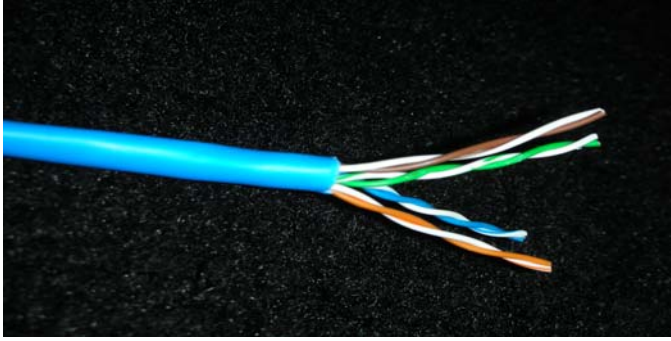
Final result



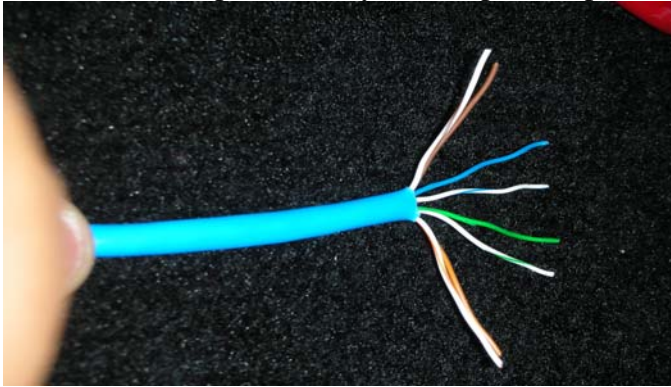
Now we are going to setup the AC Microphone Interface

***We are going to repeat the same steps stripping the cat5e cable

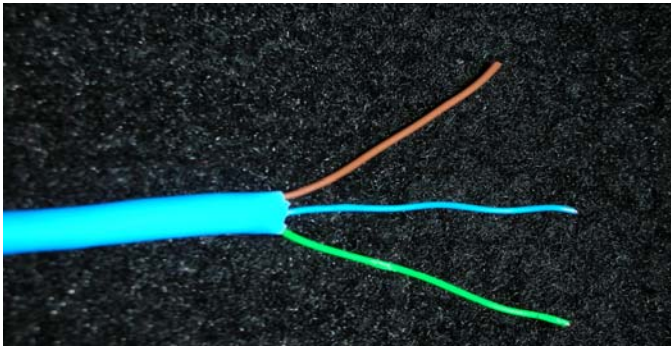
8- Strip ½ inch of cladding so the 4 pairs are exposed



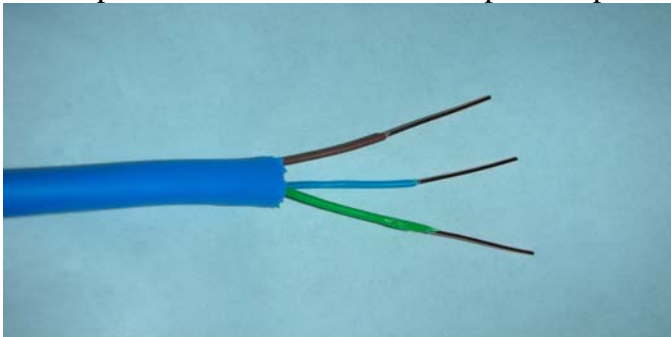
9- Un twist the pairs so they are not paired up



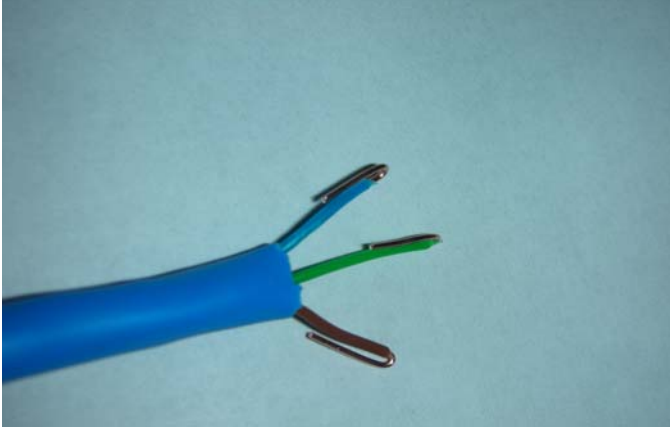
10- In this example we are using the solid blue, solid green and the solid brown cable. You can cut the rest off as shown in the picture below



11- Strip $\frac{1}{2}$ of the insulator so the cooper is exposed



12- Twist the copper ends individually so you form a small loop this will help keep the cable snug inside the connector



13- Connect the solid blue cable to the + terminator, solid green cable to the audio terminator and the solid brown cable to the com terminator



14- Now tighten the screws and verify that each cable is secure



14- Connect the yellow RCA cable to the audio out



15- Now connect the 12 v 500 mars power supply to the 12vdc Connection on the microphone interface



17. Test that you are receiving audio if you are getting to much feed back you can make an adjustment on the back of the microphone



Once you are getting clear sound you can than install the face plate
Secure the dome cover the camera