

H.264 IP Cube Camera TCM-4101

Ver. 091021

Quick Installation Guide



www.acti.com

1

Overview

1.1 PACKAGE CONTENTS

TCM-4101



Power Adaptor (Optional)



Product CD



Camera Stand



Warranty Card



Accessory



1.2 PHYSICAL DESCRIPTION



1. **Action LED Indicator**

The LED will light up after IP camera has successfully completed the boot process

2. **Built-in Microphone**

Sensitivity: $-36\text{dB} \pm 3\text{dB}$ ($0\text{dB}=1\text{V}/\text{Pa}$ at 1KHz)

S/N Ratio: More than 58dB

Directivity: Omni-directional



3. Audio Output

The IP device supports audio output with earphone jack

4. Ethernet Port

The IP device connects to the Ethernet via a standard RJ45 connector. This camera can automatically detect the best network speed when connected to other auto-negotiation(NWAY) supported devices. (10Base-T/100Base-TX Ethernet).

5. Reset Button

Step 1: Switch off IP device by disconnecting the power cable

Step 2: Press and continue to hold the Reset Button. Reconnect the power cable while continuing to hold the reset button.

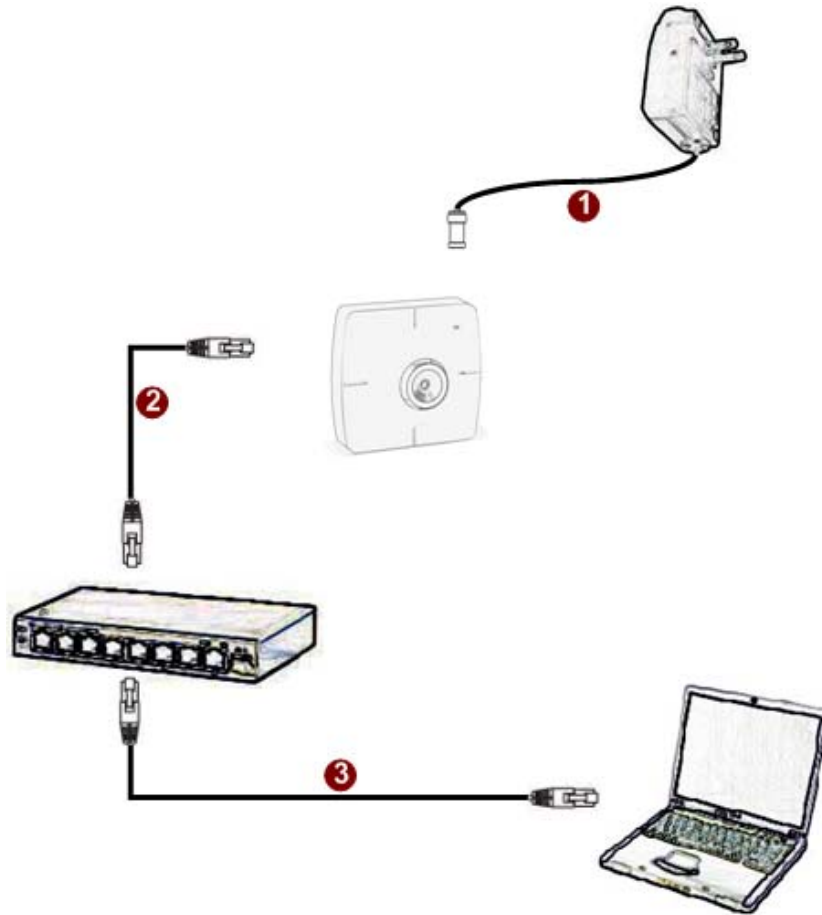
Step 3: Keep holding the reset button depressed around 12 seconds, release the reset button. The unit will start up with factory default settings.

6. Power Input

Connect the power adaptor here if your power input is DC12V.

1.3 BASIC CONNECTIONS

Follow the procedures below to connect the IP device to the respective apparatuses.



If you have a PoE(Power over Ethernet) supported switch or injector:

1. Connect your IP Cube Camera to the Switch / Injector by CAT5 or CAT6 cables with RJ45 connector.
2. Connect your Switch / Injector to PC with another CAT5 / CAT6 network cable.

If your switch does not support PoE, and you are powering the camera with power adaptor::

1. Connect the power adaptor to IP Cube Camera
2. Connect IP device's ethernet port to Network switch (via RJ45 connectors).
3. Connect a PC to the Ethernet switch (via RJ45 connectors)



NOTE: For more detailed explanations, we provide a support package that clarifies PoE related concepts for you. Please visit our web site and download the support document TS-00040.

2

Accessing Camera

If you have DHCP server / router in your network:

Many network server / routers are able to automatically provide IP addresses through DHCP. If you are using such an network, just plug in your computer and IP Cube Cam into the network, and your IP device will acquire network address by itself. Find and access the device with our IP Utility program. You may download it at:

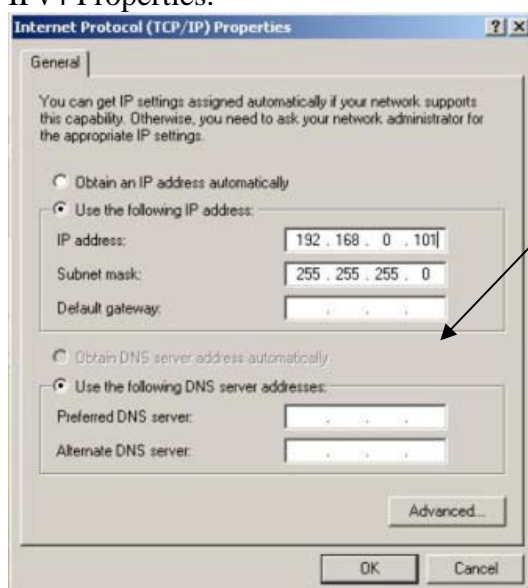
http://www.acti.com/product/detail/Software/ACTi_Utility_Suite

If you do **NOT** have DHCP server / router in your network:

1. Configure your PC to use the same subnet by changing your PC's IP address to the subnet with prefix 192.168.0.XXX. The last number should be anything from 1 to 254 except 100 and other occupied IP addresses. Subnet mask should be 255.255.255.0.

2. The default IP used by this device is 192.168.0.100. Please make sure your PC is NOT using this address, and that no two equipments use the same IP address in the network.

3. Change your IP address by going to Control Panel -> Manage Network Connections -> Right click on the connection to change -> Option -> TCP/IP IPv4 Properties.



Please set the settings as below.

IP address: 192.168. 0.xxx

Subnet mask: 255.255.255. 0

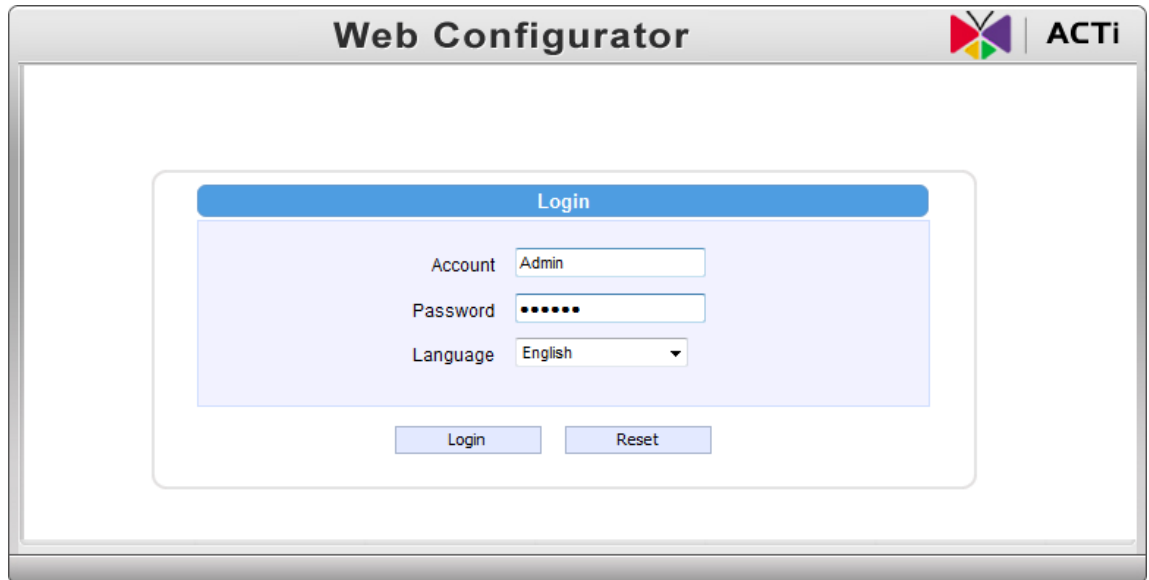
(NOTE: xxx should be a number from 1 to 254 except 100, which is used by the IP device. Please also make sure that no two equipments use the same IP address in the same network..)

4. Open Internet Explorer (Version 6.0 or above) , and type in the Default IP:

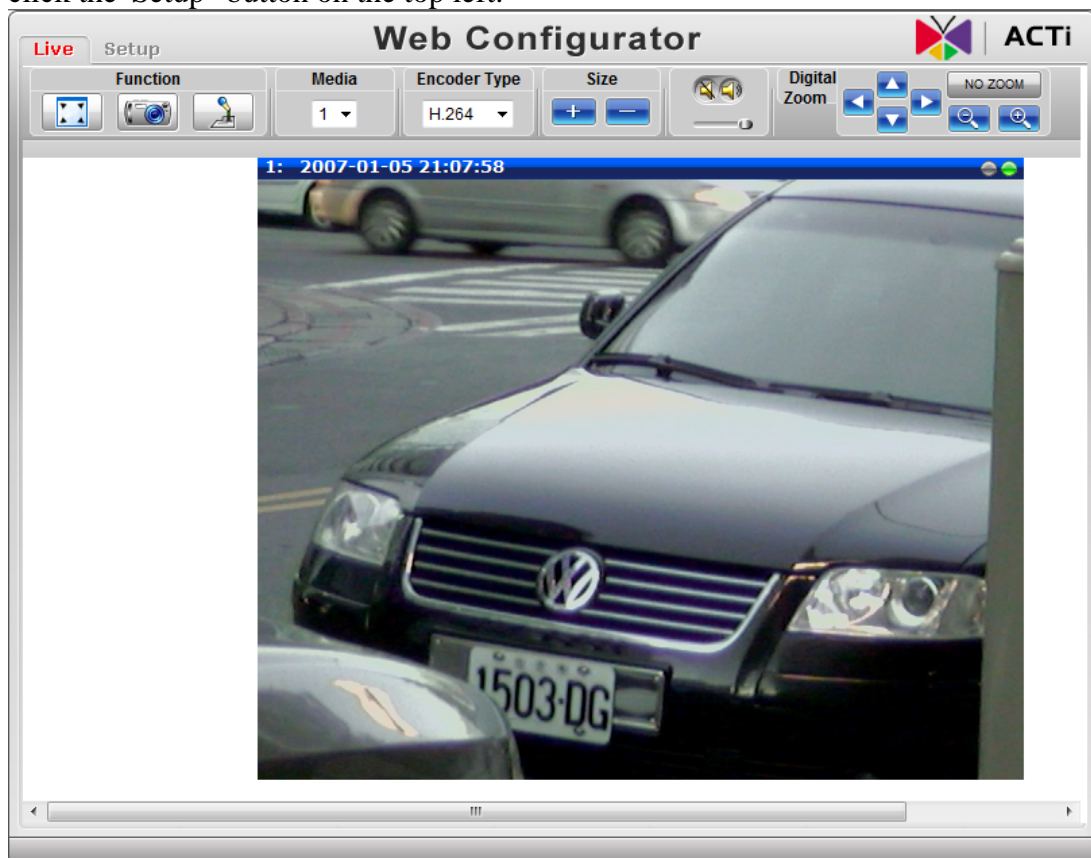
192.168.0.100

5. When you see the login window, please input default user and password:

Default User: Admin Password: 123456



6. After logging in, you will see the video from camera. To go to the main menu, click the "Setup" button on the top left.



If you are using a single camera, this is enough to access the device.

If you are using multiple devices, you need to change the current device to another unused IP address, so that when the next device is connected to the network, no two devices use the same IP. Please perform the following steps.

7. Go to Network -> Connection Type

8. Change the IP mode to Static.

9. Change the IP to 192.168.0.101 or any other unused IPs. Do NOT use the PC's IP address or 192.168.0.100.). If this is not the first device you add to the network, please also avoid other devices' IPs.

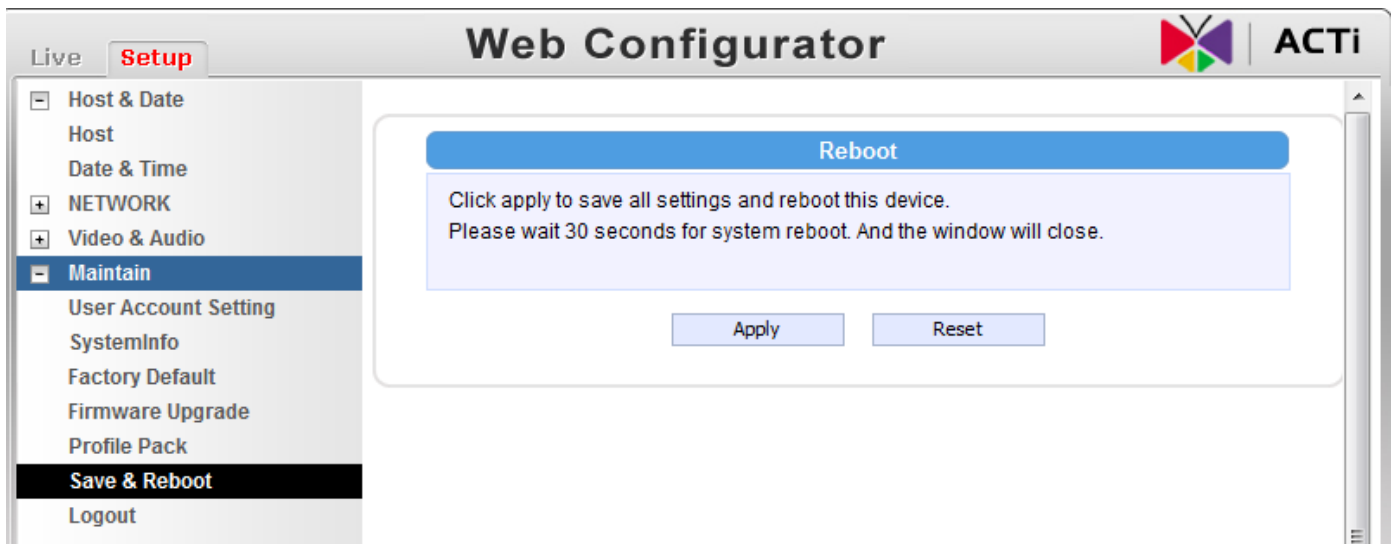
The screenshot shows the 'Web Configurator' interface with the 'Setup' tab selected. The left sidebar contains a navigation menu with 'NETWORK' expanded, and 'Connection Type' selected. The main content area is titled 'Connection Type' and contains the following settings:

- Dynamic IP Address
- Static IP Address
 - IP Address: 192 . 168 . 0 . 101
 - Subnet Mask: 255 . 255 . 255 . 0
 - ISP Gateway: [] . [] . [] . []
- PPPoE
 - User Name: []
 - Password: []

At the bottom, there is a checkbox for IPV6 and two buttons: 'Apply' and 'Reset'.

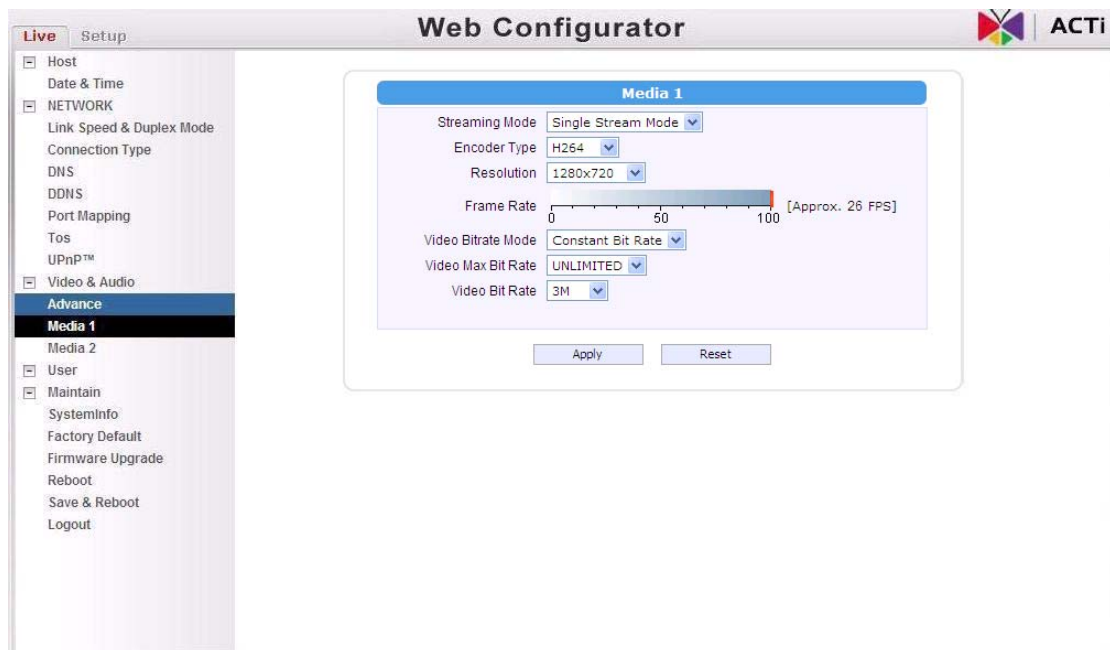
10. Click "Apply"

11. Please goto Maintain -> Save & Reboot, and click "Apply". Internet Explorer will close after a few seconds. This is normal.



12. Wait for 30 seconds, and open IE again to connect to the **new IP**. (In this example, 192.168.0.101). For the second device or more you add into the network, please type the correct IP.

13. Adjust the default Video setting by going to Video & Audio -> Media 1



For more detailed settings, please refer to Hardware and Firmware manuals.