



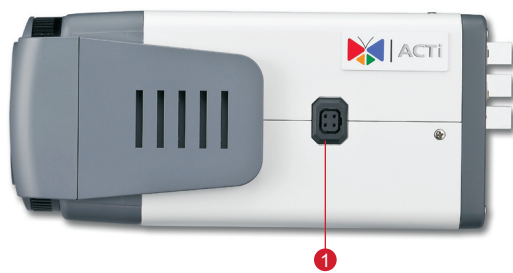
TCM-5311/5312

H.264 CCD Megapixel IP Box Camera

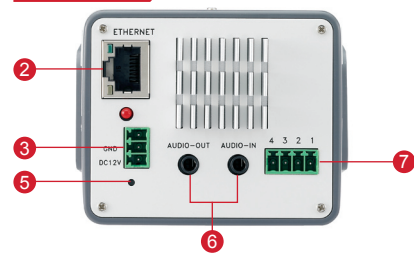


* The lens needs to be purchased separately.

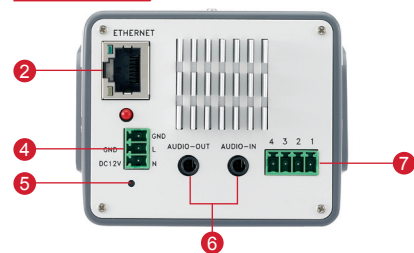
- 1/3" SONY Progressive Scan 1.25M Pixel ExviewHAD CCD
- Day and night function with Mechanical IR Cut Filter
- 0.05 Lux at F1.2
- Interchangeable Lenses Available
- Shutter Speed, White Balance, Exposure, Gain Controls supported
- The external back focus feature allows for easy and precise focus adjustments
- H.264/MPEG-4/MJPEG triple codec with two simultaneous streams
- Up to 1280 x 960 resolution at 15 FPS
- Two-way audio supported
- Hardware motion detection, Digital Input / Output
- DC 12V or Power Over Ethernet (IEEE 802.3af) supported(TCM-5311), or AC 24V power source supported(TCM-5312)



TCM-5311

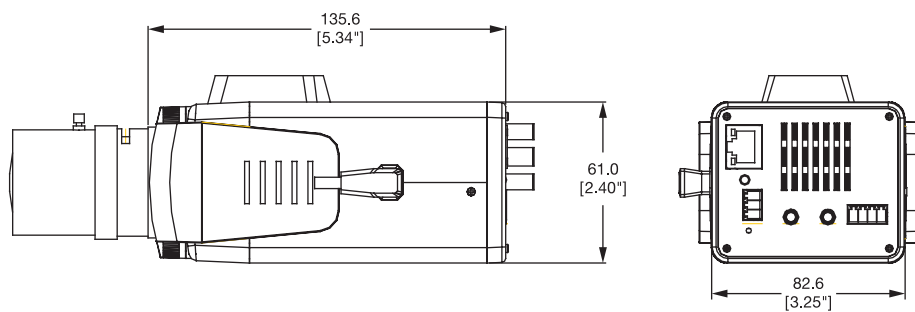


TCM-5312

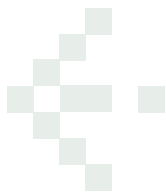


- | | |
|-----------------------------|--------------------------|
| 1 DC Iris Lens Control Port | 5 Reset Button |
| 2 Ethernet Port | 6 Audio Input / Output |
| 3 DC 12V Power Input | 7 Digital Input / Output |
| 4 AC 24V Power Input | |

DIMENSION DIAGRAM



Unit: mm [inch]



TCM-5311/5312

PRODUCT SPECIFICATION

		TCM-5311	TCM-5312
Image	Device	SONY Progressive Scan 1.25M Pixel ExviewHAD CCD	
	Size	1/3 inch	
	Effective Pixels	1296(H) x 966 (V)	
	Horizontal Resolution	900 TVL	
Min. scene Illumination	Color	Color mode automatically switched to B/W mode (User defined)	
	B/W	0.05 Lux at F1.2 (30 IRE, SAGC)	
	IR Sensitivity	from 700nm to 1100nm	
	CDS Sensor	N/A	
Lens	Lens Mount	C/CS (with adaptor)	
Synchronization	Sync. System	Internal	
Day/Night functions	Mechanical IR Cut Filter	Yes	
	Motion Detection	Yes (3 Windows)	
	Electronic shutter	2~1/500 up to 1/100,000 sec.	
	Fixed Shutter (Manual)	1/60 ~ 1/10,000 sec. (60Hz); 1/50 ~ 1/10,000 sec. (50Hz)	
Functions	Flickerless	Auto On/Off	
	BLC	Auto On/Off	
	AGC	Super AGC 0~36 dB	
	Auto Iris Control	DC Iris	
	White Balance	Auto, Indoor1, Indoor2, Outdoor1, Outdoor2, Hold Current, Manual	
	S/N Ratio	Better than 50 dB	
	Compression	H.264/ MPEG-4 SP/ MJPEG simultaneous dual streams selectable	
Video Compression	Picture Resolution	SXGA (1280x960)	
		HD 720 (1280x720)	
		VGA (640x480)	
		QVGA (320x240)	
Bit Rate	28K ~ 6M bps		
Image Frame Rate	15 fps at SXGA; 30 fps at HD720; 30 fps at VGA; 30 fps at QVGA; 30 fps at QQVGA		
Audio Input	Compression	8kHz, Mono, PCM	
	Audio Line Input	Unbalanced, 1.4Vp-p, 1Vrms, 3.5mm Phone Jack	
Audio Output	Compression	8kHz, Mono, PCM	
	Audio Line Output	Unbalanced, 1.4Vp-p, 1Vrms, 3.5mm Phone Jack	
Alarm	Digital Input	1, TTL, Terminal Block	
	Digital Output	1, TTL, Terminal Block	
External I/O	Reset Button	Factory Default	
	LED	System Status	
Network	Ethernet	Ethernet(10/100 Base-T), RJ-45 connector	
	Protocol	TCP, UDP, HTTP, HTTPS, DHCP, PPPoE, RTP, RTSP, DNS, DDNS, NTP, ICMP, ARP, IGMP, SMTP, FTP, UPnP, IPv6	
Software	Web Browser	Microsoft Internet Explorer 6.0 or above	
	SDK	ACTi SDK-10000	
Operating	Security	Password Protection: Configured by the Administrator	
	Temperature	-10°C ~ 50°C (14°F ~ 122°F)	
Power	Power Requirement	PoE (IEEE 802.3af) with Class 3	AC 24 V± 10%
	Power Consumption	6.72 W (DC 12 V) 7.68 W (PoE)	8.04 W (DC 12V) 6.24 VA (AC 24V)
Physical	Dimensions (WxHxD)	135.6mm x 82.6mm x 61.0mm (5.34" x 3.25" x 2.40")	
	Weight	505g (1.1 lb)	
Approvals	Certificate	CE, FCC	

MODEL SELECTION

Model Name	DC12V / PoE	DC 12V / AC24V
TCM-5311	V	
TCM-5312		V

ACCESSORY OPTIONS

- Lens, f2.8~12mm F1.3, CS mount, Format 1/3" PLEN-0203
- Lens, f8~80mm F1.6, C mount, Format 1/2" PLEN-0205
- Camera bracket PMAX-1100-000R0
- Housing bracket PMAX-1101-000R0
- Outdoor Housing (AC 110V) PMAX-0200-000R0
- Outdoor Housing (AC 220V) PMAX-0201-000R0



PMAX-1100-000R0



PMAX-1101-000R0



PMAX-0200-000R0

* All specifications are subject to change without notice.
* All brand names and registered trademarks are the property of their respective owners.