



USB back up for the Pro Ver.2 dvrs

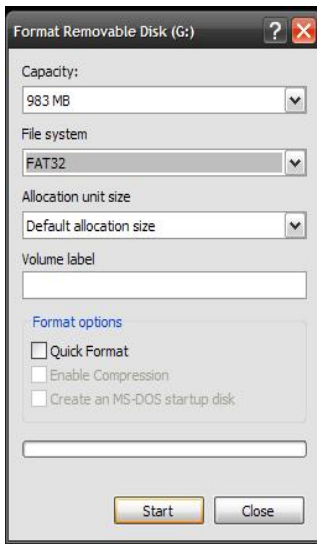
1. Connect the USB Drive to your USB connection on your computer windows should automatically detect the USB Drive you will notice pop up notifications on the lower right hand corner of your desktop.
2. Once windows has detected the USB Drive go to the icon on your desktop called my computer



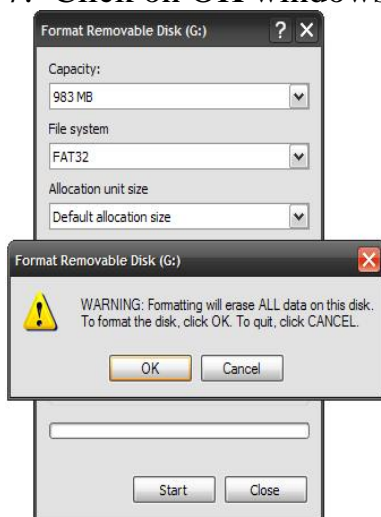
3. The drive letter windows assigns your USB Drive could vary. Sometimes the USB Drive has a name attached to it so it may show ex: G: Travel Drive  
Or it may label it as G: Removable Disk!! again the drive letter could vary!!



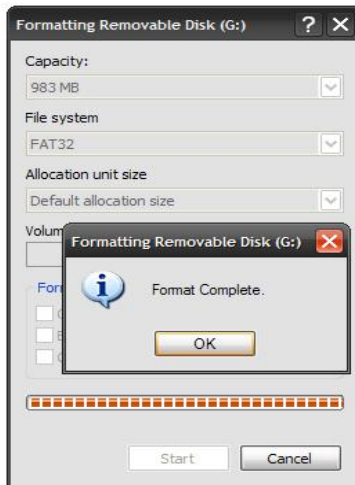
4. Right click on G: Removable Disk and then click on format a window should come up that looks like this
5. Under file system select fat32 than click on start



6. A popup will come up **\*\*\*WARNING IF YOU HAVE DATA ON YOUR USB DRIVE BACK IT UP TO YOUR COMPUTER. ALL DATA WILL BE ERASED AFTER CLICK OK\*\*\***
7. Click on OK windows will now format the USB Drive



8. After it is done formatting the USB Drive you should get a window like this



9. Click Ok than click on close  
10. Your USB Drive is ready to be used on your DVR

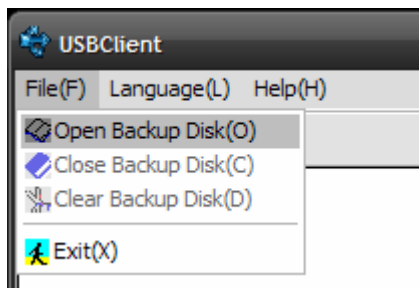
11. Install the client software or you can download it from our website  
[http://www.securitycameraworld.com/files\\_for\\_download/ProSoftwareNetClient-KangLe\\_NoLogo.zip](http://www.securitycameraworld.com/files_for_download/ProSoftwareNetClient-KangLe_NoLogo.zip)

**\*\*\*\* NOTE: YOU CAN DOWNLOAD THE USB CLIENT ZIP with out having to install the full software from the cd or download page!!!**  
[http://www.securitycameraworld.com/files\\_for\\_download/prousbclient.zip](http://www.securitycameraworld.com/files_for_download/prousbclient.zip)

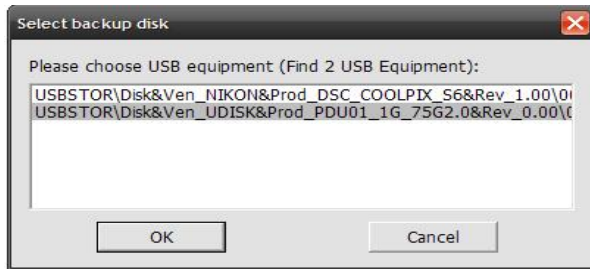
12. Once the software is installed click on start, all programs, dvr monitor systems and then click on USB client



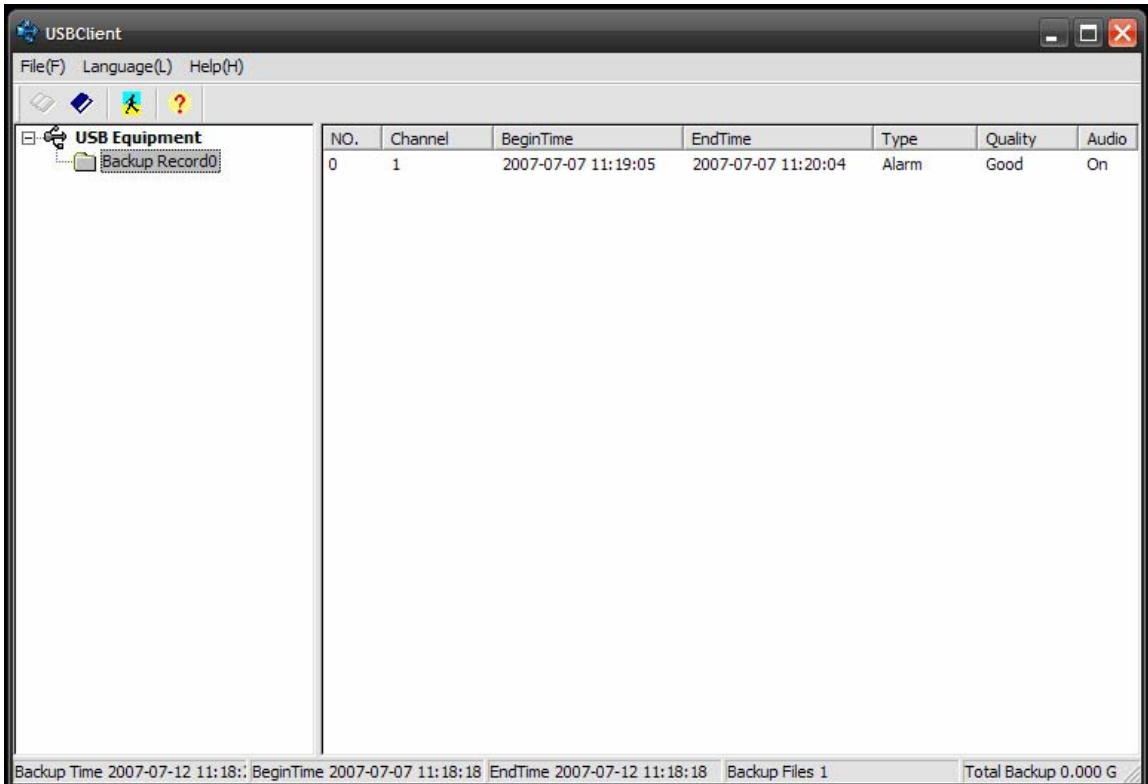
13. A window will open this is the USB client for the pro series dvr. Click on File than click open backup disk



14. A window will open in here it will show all USB devices that is categorized as a storage device make sure you select the correct device than click ok



15. Click on Backup Record you will get a list of backed up files on the right side pane window



16. Right click on the file you want to view and than click on play

17. A window will come up which is the player, click on the play button and the video will start playing